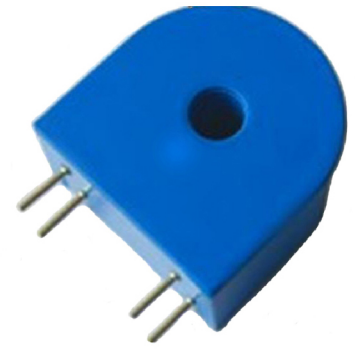


FWCT-09 Micro Precision Current Transformer for KWH Meters



TECHNICAL INFORMATION

Commodity	Specifications	Primary current	Secondary current	Overload multiple	Linearity		(Ω) Load
					(±%) Ratio difference	(±%) Phase displacement	
CTs	10(40)A/10mA	10	10	4	<0.1	≤5	<20
	10(60)A/10mA	10	10	6	<0.1	≤5	<20
	10(60)A/4mA	10	4	6	<0.1	≤5	<20
	10(60)A/4mA	10	4	6	<0.1	≤5	<20
	5(60)A/2.5mA	5	2.5	12	<0.1	≤5	<20
	5(60)A/2mA	5	2	12	<0.1	≤5	<20
	5(80)A/5mA	5	5	16	<0.1	≤5	<20
	20(100)A/20mA	20	20	5	<0.1	≤5	<20
	5(40)A/5mA	5	5	8	<0.1	≤5	<20
	15(60)A/10mA	15	10	4	<0.1	≤5	<20
	5(30)A/5mA	5	5	6	<0.1	≤5	<20
	20(80)A/10mA	20	10	4	<0.1	≤5	<20
	10(100)A/10mA	10	10	10	<0.1	≤5	<20
	5(20)A/5mA	5	5	4	<0.1	≤5	<20
The Triple CTs	0.3(1.2)A/5mA	0.3	5	4	<0.1	≤5	<20
	0.5(2)A/5mA	0.5	5	4	<0.1	≤5	<20
	1(4)A/5mA	1	5	4	<0.1	≤5	<20
	1.5(6)A/5mA	1.5	5	4	<0.1	≤5	<20
	2.5(10)A/5mA	2.5	5	4	<0.1	≤5	<20

Transformers Dedicated in Watt-hour Meters

a. Main Features:

- (1)- Small in size, high precision, excellent uniformity.
- (2)- Wide limitation standard, strong resistance to saturation.
- (3)- Flexible installation, both the PCB mode and the connection way are available for installation.

b. Electrical Parameters:

- (1)- Rated input current (Lin): 0-20A (According to customer requirements)
- (2)- Rated output current(Lin):0-20mA (According to customer requirements)
- (3)- Max overload current(Lin): 20×lin
- (4)- Non-linearity: Ratio difference <±0.1%; Angle difference <±5'
- (5)- Load resistance: ≤20Ω
- (6)- Power frequency withstand voltage: 4kV 2mA 1min
- (7)- Operation temperature: -40℃ ~ +85℃ (6)
- (8)- Insulation resistance: 500MΩ @500VDC

c. Technical parameters of commonly used product specifications

Note: The above specifications are stock products' specifications. We can also design for customers according to their requirements.

PHYSICAL CHARACTERISTICS

